

Station Description Sheet **DAB**

1. General Information
2. Geographical Information / Geomorphology
3. Geological Information
4. Geotechnical Site Characterization
5. Geophysical Site Characterization
6. Site Response
7. References

1. GENERAL INFORMATION



Photo 1: View of the hosting building

Station Code: DAB

Network: Euroseis

Instrumentation: Check the up-to-date EUROSEISTEST stations history file at <http://euroseisdb.civil.auth.gr/stations>

Power supply: AC

Housing: in a farmhouse

2. GEOGRAPHICAL INFORMATION / GEOMORPHOLOGY



Figure 1: Location map of DAB station

Location: in the Mygdonian basin

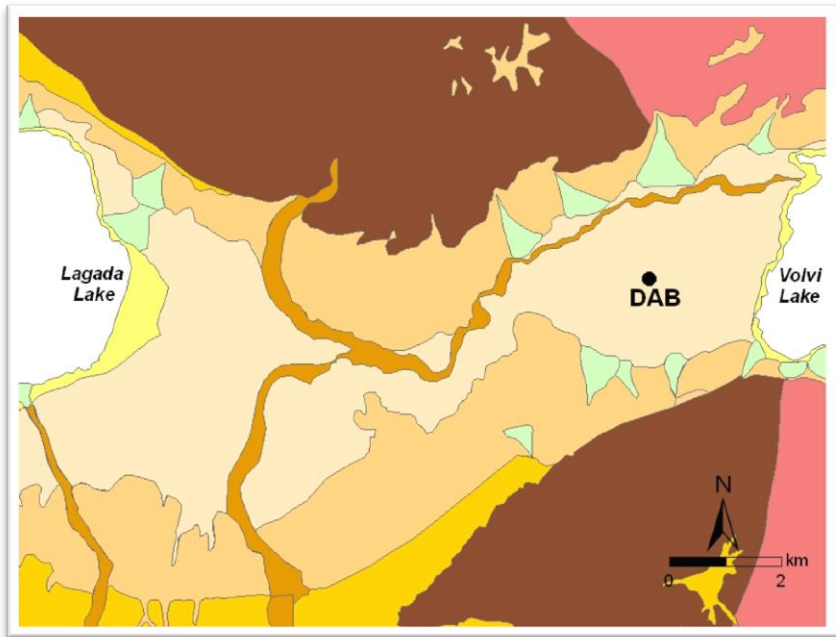
Elevation (from sea level): 44 m

Station coordinates: $23.326752^{\circ}\text{E} / 40.676817^{\circ}\text{N}$

Projection system: WGS84

Site morphology: Valley center (east part of the valley)

3. GEOLOGICAL INFORMATION



Legend

- Holocene**
 - Lacustrine sediments
 - River deposits/torrent beds
 - Valley deposits
- Pleistocene**
 - Lacustrine sediments
 - Terrestrial (river and flood) red beds
- Quaternary**
 - Alluvial fans
- Alpine formations**
 - Two-mica and biotite granite
 - Two-mica gneiss

Figure 2: Geological map of the central Mygdonian basin

Surface geology (from geological map): on Holocene valley deposits

Reference for geological map: Geological map of Greece - Scale 1:50000, Map Sheets of "Thermi" and "Zagliverion", (IGME, 1978)

Boreholes (with core description) in the proximity of the station: not known

4. GEOTECHNICAL SITE CHARACTERIZATION

No available data.

5. GEOPHYSICAL SITE CHARACTERIZATION

No available data.

6. SITE RESPONSE

Site response data for station DAB include:

1. Standard Spectral Ratio technique (SSR) applied on the S-wave part of earthquake recordings on a collocated to DAB station (Raptakis et al., 2005)

Data are available in ascii format in:

http://euroseisdb.civil.auth.gr/uploads/station/response/6/Site_response_DAB.txt

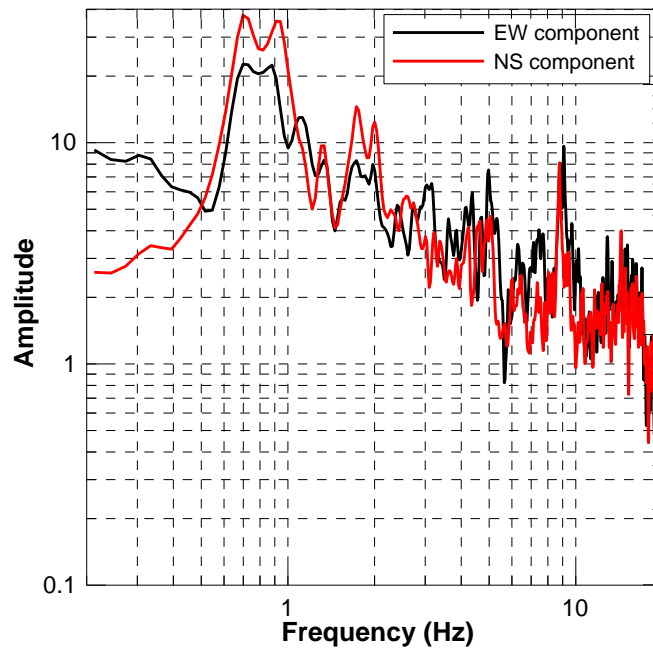


Figure 3: Standard Spectral Ratios (SSR) for the two horizontal components at a site collocated to DAB. Ratios have been computed using the S-wave part of earthquake recordings on a temporary station.

7. REFERENCES

- EUROSEISRISK Project Reports, 2002–2005. (*Available in PDF upon request*)
- IGME, 1978. Geological map of Greece - Scale 1:50.000. Map Sheets of "Thermi" and "Zagliverion".
- Raptakis D., M. Manakou, F.-J. Chavez-Garcia, K. Makra and K. Pitilakis, 2005. 3D configuration of Mygdonian basin and preliminary estimate of its site response. *Soil Dynamics and Earthquake Engineering*, Vol. 25, pp. 871-887.